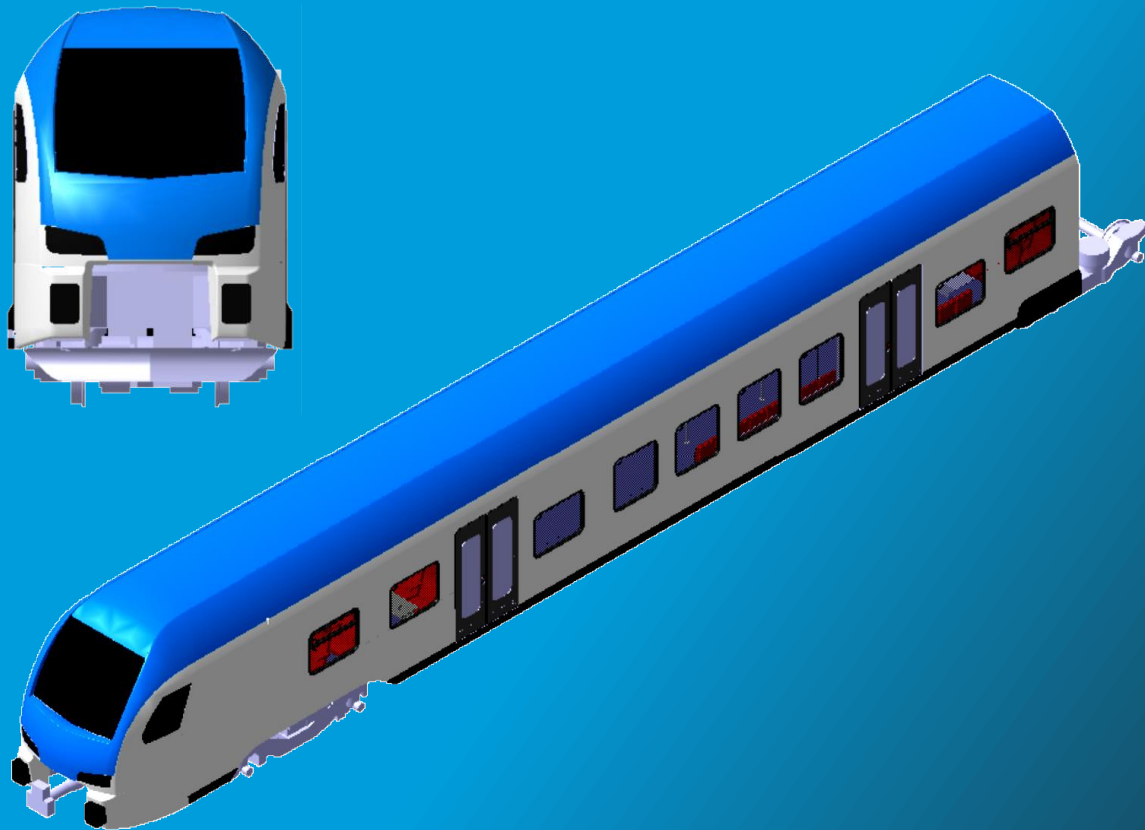


Desain & Teknik Indonesia (DTI)

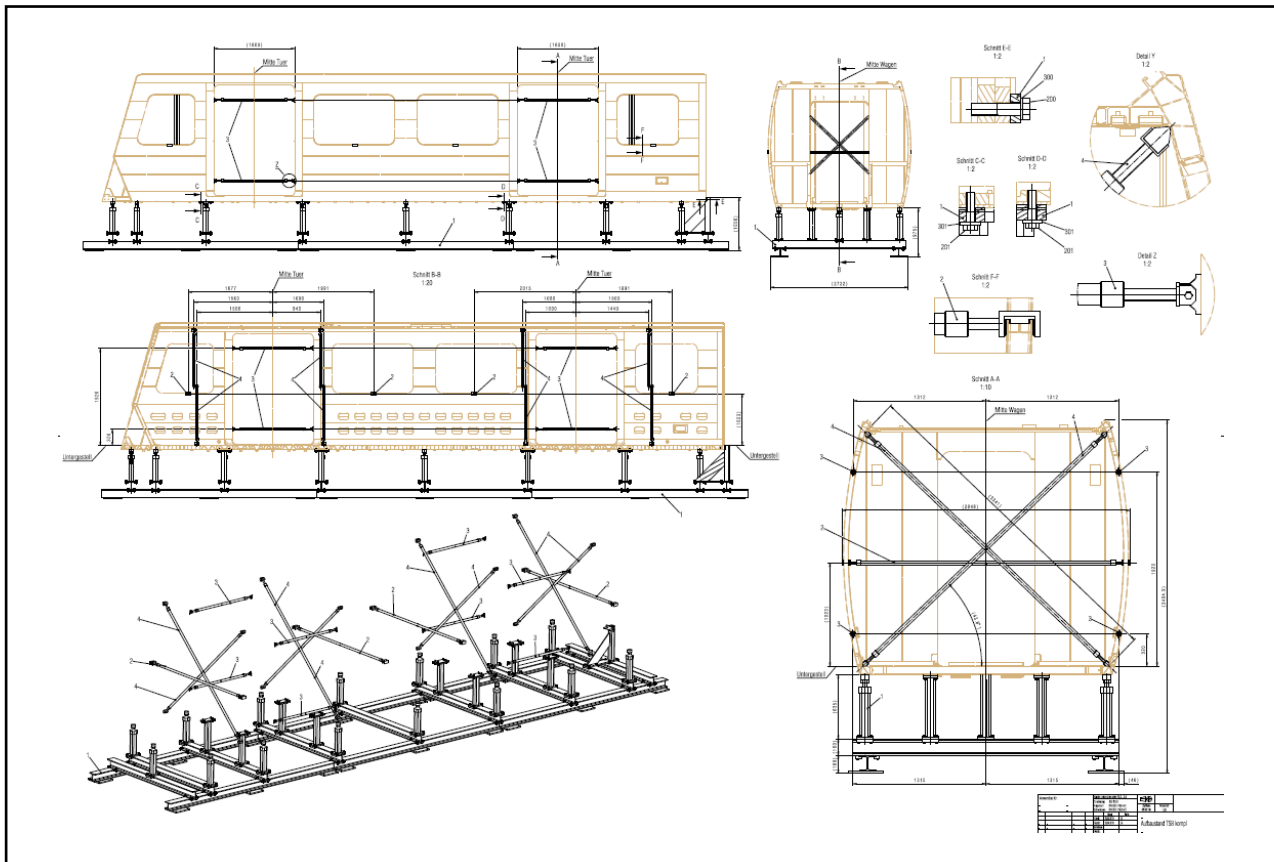
provides another better technical solutions in

**Engineering Services
Special Purpose Machine
QC/Test Equipment**



Design & Drafting of Mechanical Component

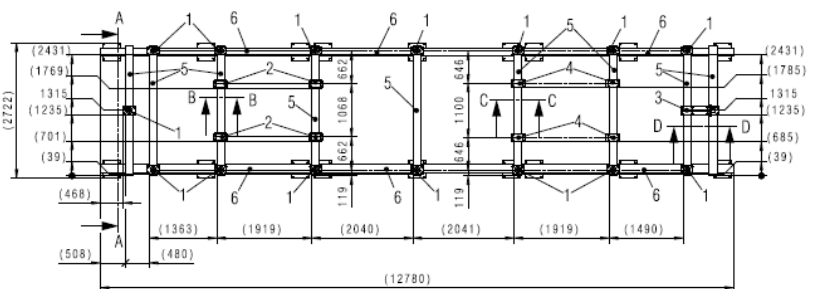
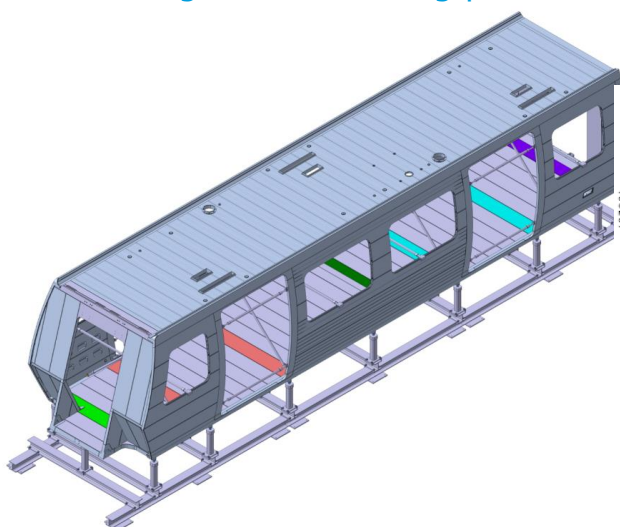
Country of customer: Switzerland



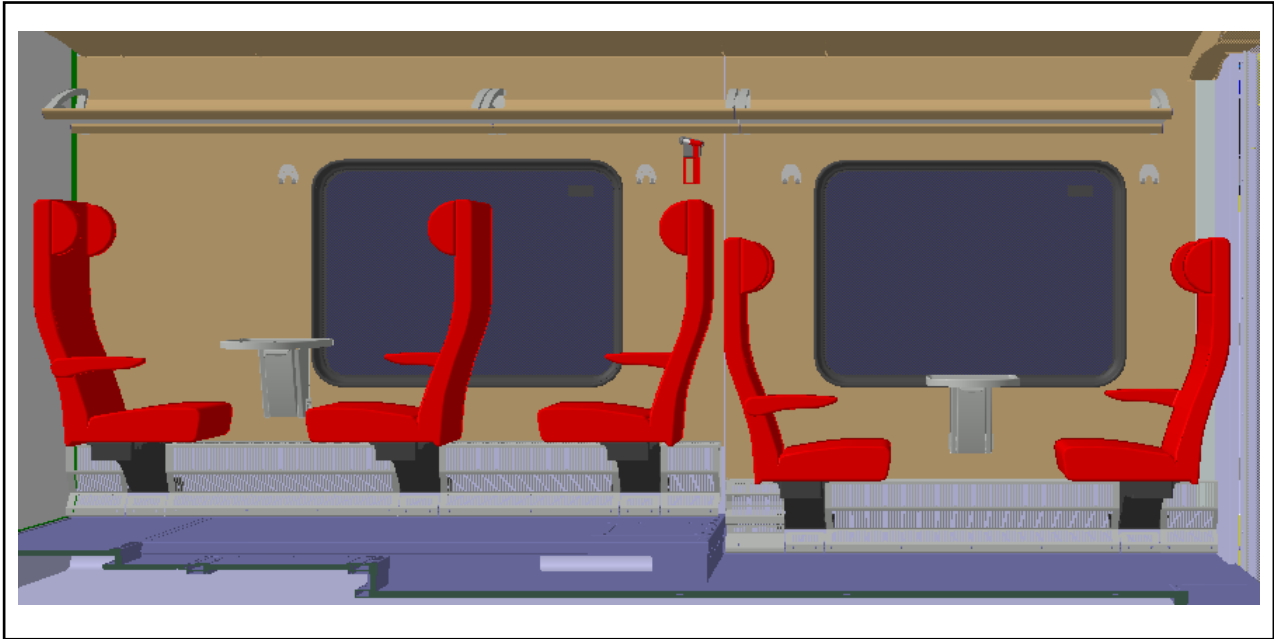
With more than 15 years' experience, our engineers can produce designs as outlined in drawings and part lists for customers in Switzerland and other European countries.

This is supported by our software as well as CATIA V5 and high-end hardware.

DTI makes a frame to support the train. This frame has been processed by FEM Analysis. We have to think about the grip design so that it's easy during the assembling process

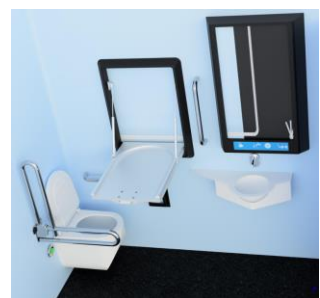


Design & Drafting of Mechanical Component
Country of customer: Switzerland



We can make interior constructions for floors, walls, machinist rooms, connections between carriages, roofs, windows, insulation and more.

Design & drafting work is carried out in accordance with DIN and ISO.



**For further information or inquiry
please feel free to contact us**



**Mr. Bimo Wasito Adi
(Bimo)**

Head of Business Development
Email: bimo@dt-id.com
Mobile / WA: +62 811 236735



**Desain & Teknik Indonesia, PT
Jl. Sekejati 40
Bandung 40285
INDONESIA
www.dt-id.com**